

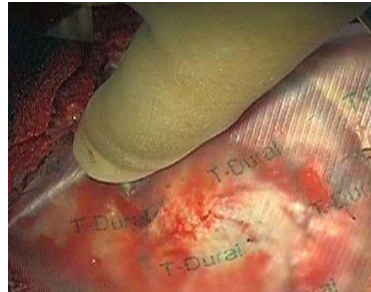
1. Open and Dispense



Carefully peel apart inner pouch in sterile field. Now gently remove patch with forceps. No preparation is necessary and the patch is now ready to use. Ensure the logo is facing upwards and is readable throughout placement.

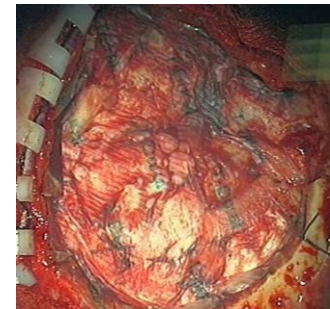
2. Apply to Target Tissue

Target tissue should be gently swabbed, but does not need to be absolutely dry. Place the patch gently on the tissue. Aim for a 1cm margin from suture line to the edge of the Patch. If necessary the patch can be repositioned if this is performed immediately.

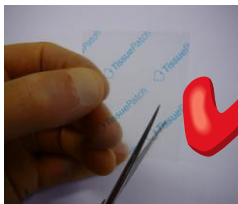


3. Adhere to Target Tissue

Hold a damp swab over the patch, "encouraging contact" for 60 seconds. If reassurance is needed repeat the exercise but do not reposition or move the patch once in position. Overlapping patch edges to achieve coverage is possible although adhesion to underlying patch will be reduced.



Any Questions?



Can I cut it to shape?
Yes, but remember to restrict handling to a minimum



Do I need to wet it?
No. Do not wet before application as this will adversely affect adhesion



Should I test adherence?
No more than necessary and never with sharp instruments